

Small PC card connector MB type (Socket & Header)

1mm pitch

[Type]
Socket & Ejector 68-circuit
[Current rating]
0.5A/line

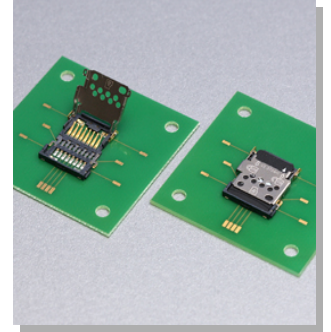


Sockets and headers for small PC cards, having 68 double-row circuits, conforming to PCACIA/JEIDA. *Socket is of straddle-type, designed to accommodate PC board between the two solder tail rows. *Header is with stand-off 0mm, available in both normal and reverse types.

SDHK Connector

1.1mm pitch

[Type]
For Micro SD card
Flip cover type
[Current rating]
0.5A
[Voltage rating]
15V

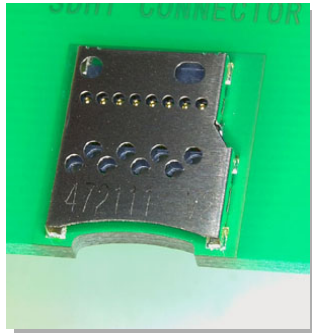


This is micro SD card connector of flip cover type that can approach from above the PC board surface.

SDHT connector

1.1mm pitch

[Type]
For Micro SD card
[Current rating]
0.5A
[Voltage rating]
15V



This is a space saving and Push-Pull type connector for Micro SD card.

CF Card connector MA type (Socket & Header)

1.27mm pitch

[Type]
For CF cards, Socket & Ejector
[Current rating]
0.5A/line

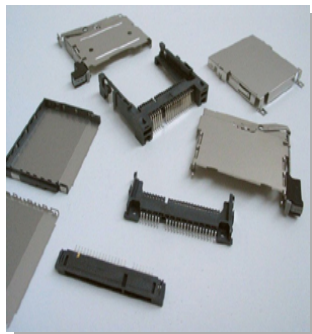


Socket and header which have 50 double-row circuits, conforming to the standard CFA. *A variety of sockets and headers are available. 2 types of sockets are available, SMT type and double-row straddle type designed to accommodate PC board between the two solder tail rows.

CFF connector

1.27mm pitch

[Type]
Standard for CFast; Card Ejector with locking mechanism

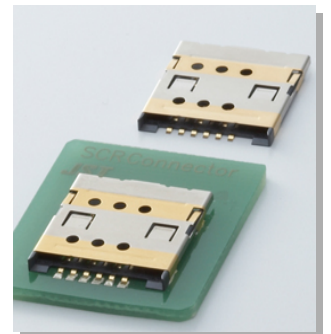


This is the connector for CFast; Card complying with CFast; Specification.

SCR connector

1.52mm pitch

[Type]
For SIM/UIM card
For mobile phones, I/O connector
[Current rating]
0.7A
[Voltage rating]
30V



This connector is SIM (UIM) card connector and designed to achieve low profile and space saving. A strong shock such as a fall is endured.

SCK connector

2.54mm pitch

[Type]
For SIM/UIM card

[Current rating]
1.0A

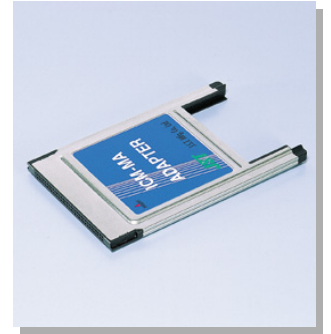
[Voltage rating]
30V



The connector is designed for the SIM Card, complying with the GSM 11.11 standard, which will be used in the European digital GSM mobile phones. This connector is also suitable for the USIM Card to be used in the Third generation of mobile network (W-CDMA).

CF Card connector MA type (Adapter)

[Type]
Adapter card, Conversion into cards for PCMCIA/JEIDA Ver.4.1 slot



The use of the adapter card allows existing equipment with PCMCIA slots, the facility to use the newly developed Compact Flash Technology.*A variety of products are available to be applicable to CF cards types I/II.*Protected against static electricity

CF Card connector MA type (Ejector)

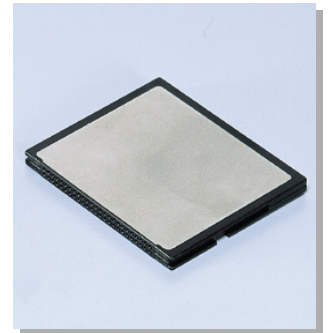
[Type]
For CF cards, Ejector



Applicable to CF cards types I/II*The assembly of the ejector mechanism to the mounted header is a simple one-touch operation.*The ejector makes contact with the solder tabs of the header, thus preventing static electricity.

CF Card connector MA type (Frame set)

[Type]
For CF cards, Frame kit



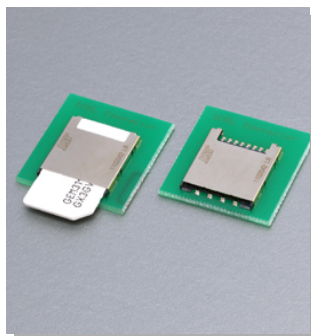
The kit is assembled by ultrasonic welding method which provides strong and heat resistant assembly with less time.

SCRL Connector

[Type]
For SIM cards
Push-pull type

[Current rating]
0.7A

[Voltage rating]
30V



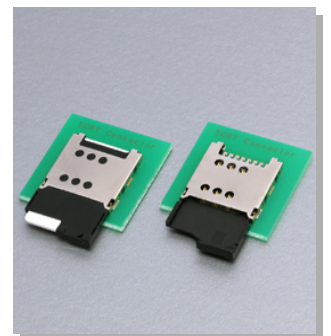
A manual insertion type connector for SIM card and Mini B-CAS card used in mobile phone

SCRT Connector

[Type]
For SIM cards

[Current rating]
0.7A

[Voltage rating]
30V



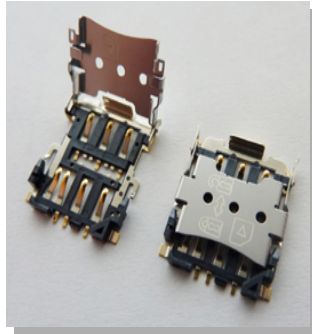
A tray type connector for SIM card Mini B-CAS card used in mobile phone Low profile type connector with mounting height of 1.45mm

SCZW connector

[Type]
For 4FF SIM Card

[Current rating]
0.7A

[Voltage rating]
30V



This is a flip cover type connector for the 4FF SIM card which downsized the conventional SIM card.

SDHL connector

[Type]
For Micro SD card

[Current rating]
0.5A

[Voltage rating]
100V



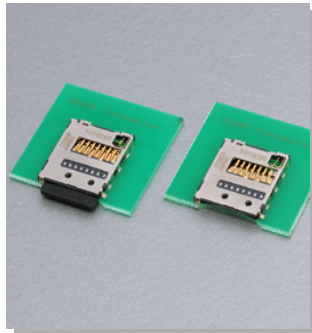
This is the connector for micro-SD card connector in which mounting height of 1.4 mm maximum is kept and push-push mechanism is adopted.

SDHR Connector

[Type]
For Micro SD card

[Current rating]
0.5A

[Voltage rating]
100V



This is the connector for micro SD card connector in which mounting height of 1.45mm maximum is kept and push-push mechanism is adopted.

Small PC card connector MB type (Ejector)

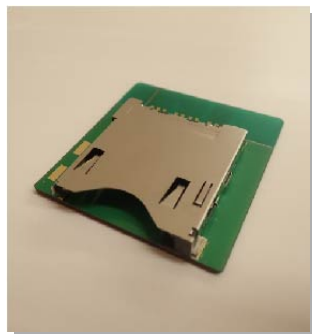
[Type]
Ejector 68-circuit



Ejector is, with the left button, to be assembled (with screws) after header is mounted. The frame has the contact point for the grounding clip on the small PC card."Card frame (for types I & II cards)"

XCC connector

[Current rating]
1.2 A for pin No. 10
0.5 A for other pins than pin No. 10



This is a card push type connector designed for CFexpress Type B card and XQD card.